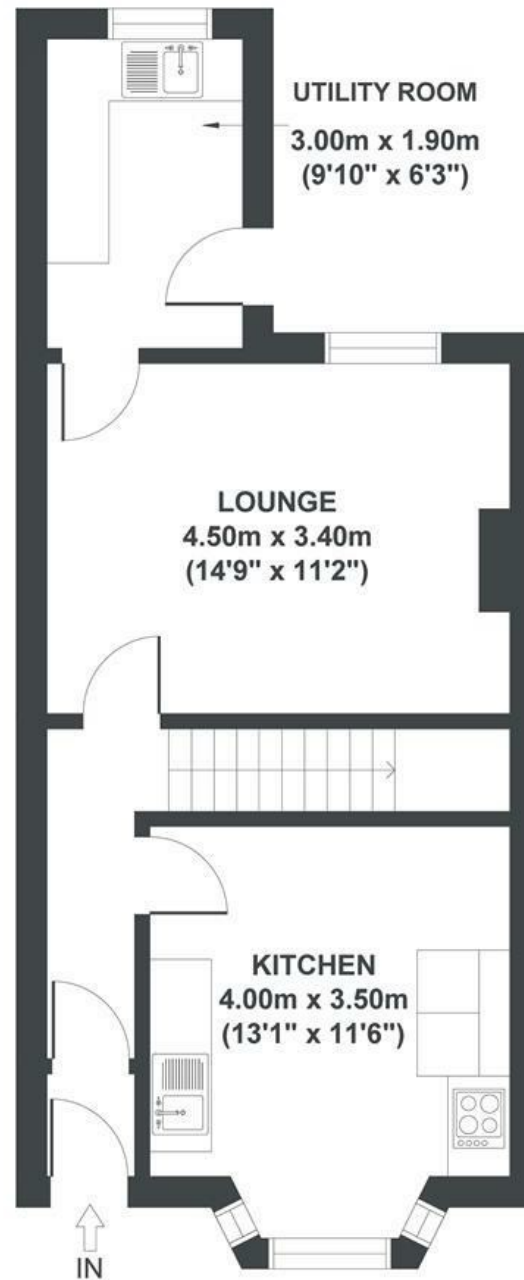


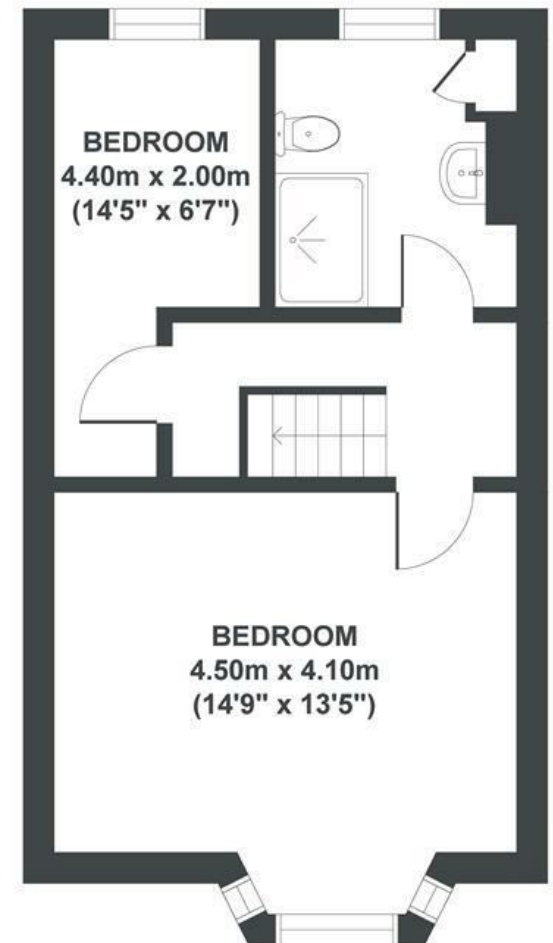
Bellevue Road

ST GEORGE

APPROXIMATE FLOOR AREA
80 SQM / 861 SQFT



GROUND FLOOR



FIRST FLOOR

Boardwalk

Bellevue Road

ST. GEORGE, BRISTOL



£315,000



Bristol, BS5

7PG



2 Bedrooms



1 Bathrooms

"Bellevue Road is an ideal location for first-time buyers and new families alike. The street is removed from the hubbub of the city centre without being isolated. In just 20 minutes, you could be tasting wine at Native Vine in Redfield, eating lunch at Orchard Coffee & Co near the park, or enjoying a craft beer at The Lyons Den in Kingswood.

And for those who enjoy a walk, Troopers Hill Nature Reserve, St. George Park, Dundridge Park, Magpie Bottom, and Conham River Park are all within 10 minutes on foot. Perfect if you've got a dog or want to escape and enjoy nature. The river is ideal for swimming in the summer months.

The house is fantastic - we've lovingly restored it since moving in six years ago - featuring a few lovely period touches and all the classic benefits of a Victorian property; big bay windows, spacious high ceilings, and thick walls. The garden, in particular, is a pleasant place to sit and even eat dinner as it gets the sun all afternoon and evening."

